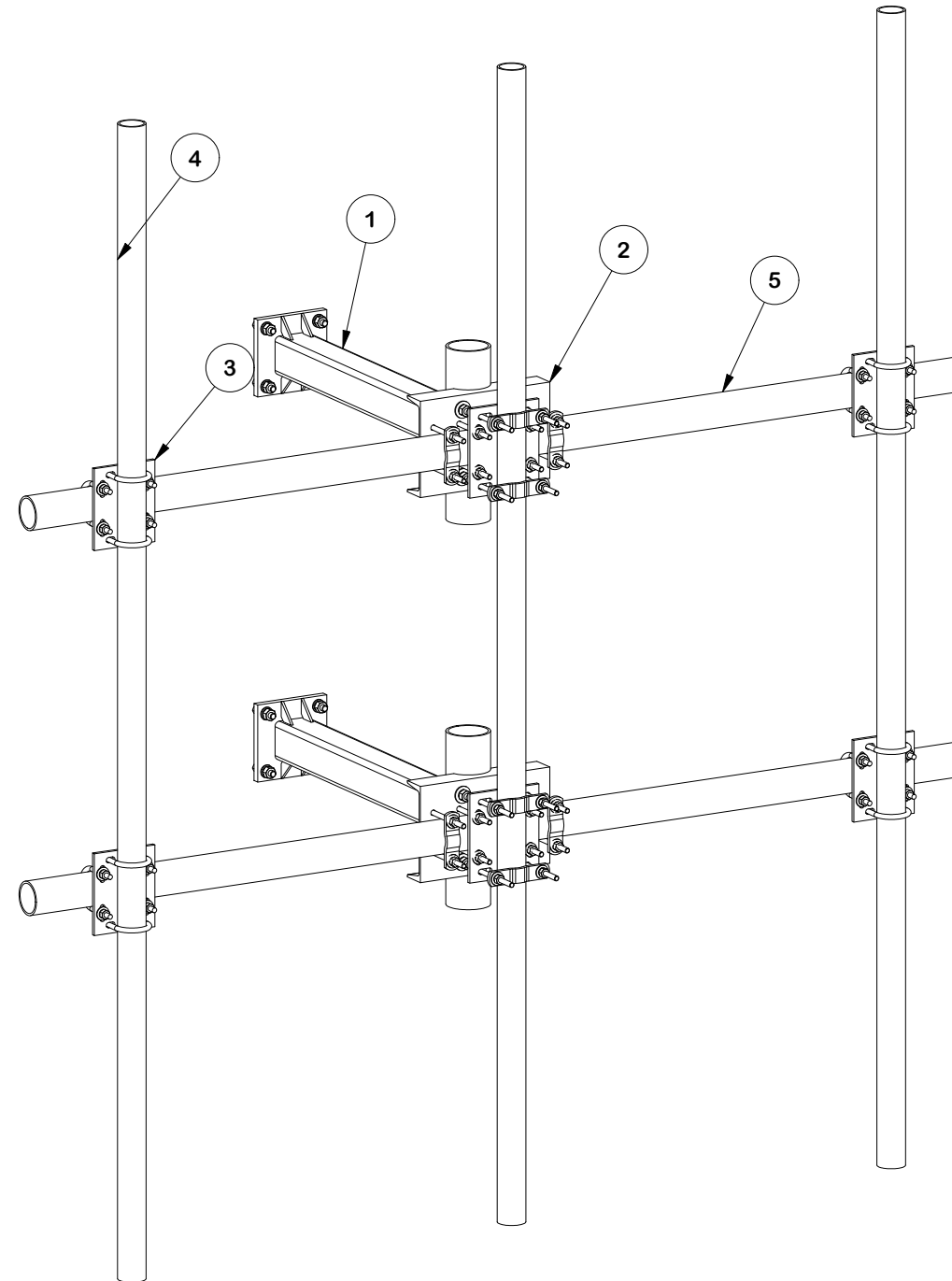


PARTS LIST						
ITEM	QTY	PART NO.	PART DESCRIPTION	LENGTH	UNIT WT.	NET WT.
1	2	SV197-36	36" SUPPORT ARM KIT		70.12	140.24
2	2	SP216-CK	PIPE SUPPORT CROSS PLATE CENTER KIT		47.47	94.94
3	4	SCX45-K	CROSSOVER PLATE KIT 3-1/2" X 2-7/8"		10.09	40.36
4	3	P30120	2-7/8" x 120" (2-1/2" SCH. 40) GALVANIZED PIPE	120 in	58.07	174.20
5	2	P3108	3" SCH. 40 PIPE (3.5" O.D. x 0.216" WALL) (A53 Gr.B Fy=35 ksi min.)	108 in	71.76	143.52
					TOTAL WT. #	593.26



FINISH:  
HOT DIP GALVANIZED.

**TOLERANCE NOTES**

TOLERANCES ON DIMENSIONS, UNLESS OTHERWISE NOTED ARE:  
 SAWED, SHEARED AND GAS CUT EDGES ( $\pm 0.030"$ )  
 DRILLED AND GAS CUT HOLES ( $\pm 0.030"$ ) - NO CONING OF HOLES  
 LASER CUT EDGES AND HOLES ( $\pm 0.010"$ ) - NO CONING OF HOLES  
 BENDS AND ANGLES ARE  $\pm 1/2$  DEGREE  
 ALL OTHER MACHINING ( $\pm 0.030"$ )  
 ALL OTHER ASSEMBLY ( $\pm 0.060"$ )

PATENT INFORMATION: WWW.SITEPRO1.COM/PATENTS

PROPRIETARY NOTE:  
 THE DATA AND TECHNIQUES CONTAINED IN THIS DRAWING ARE PROPRIETARY INFORMATION OF VALMONT INDUSTRIES AND CONSIDERED A TRADE SECRET. ANY USE OR DISCLOSURE WITHOUT THE CONSENT OF VALMONT INDUSTRIES IS STRICTLY PROHIBITED.

DESCRIPTION  
**HEAVY T1-8-3  
 8' NOMINAL SINGLE-SECTOR  
 DUAL-LEVEL T-ARM KIT,  
 W/ 3 MAST PIPES, 3' STANDOFF & NO COLLAR**

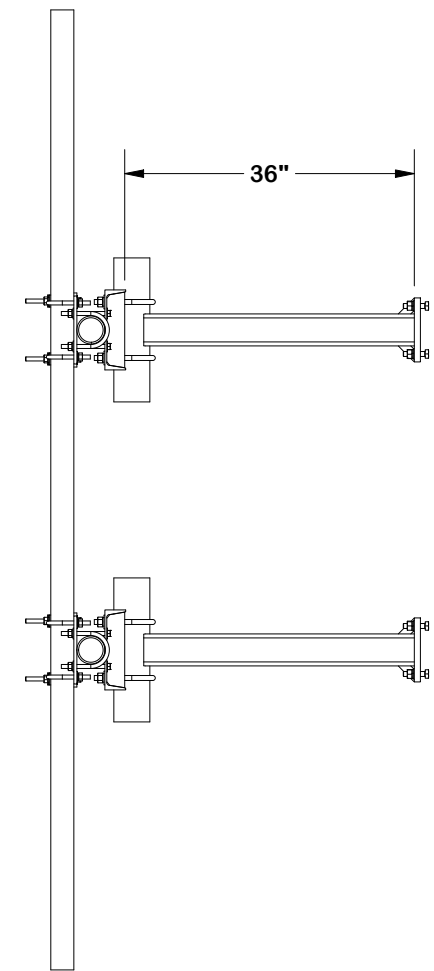
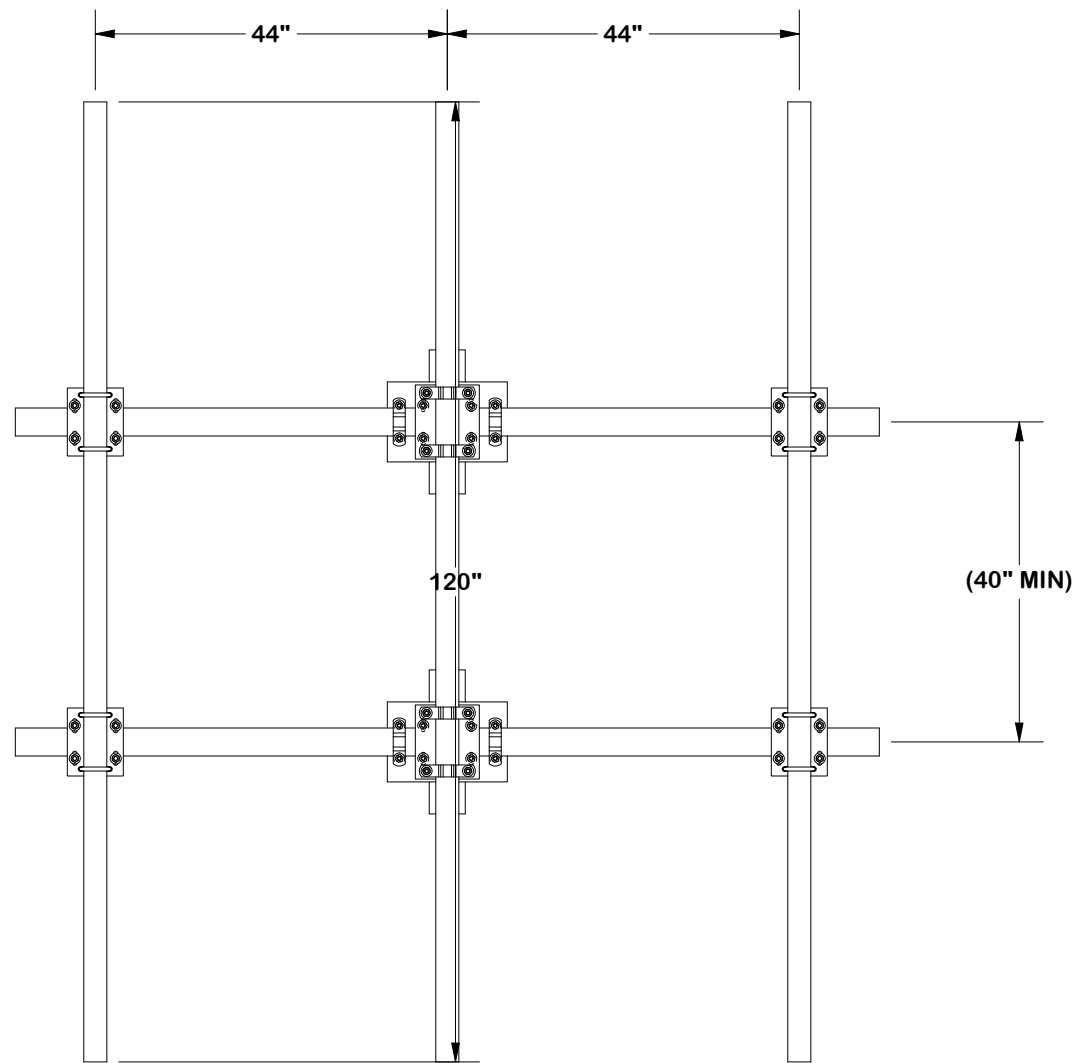
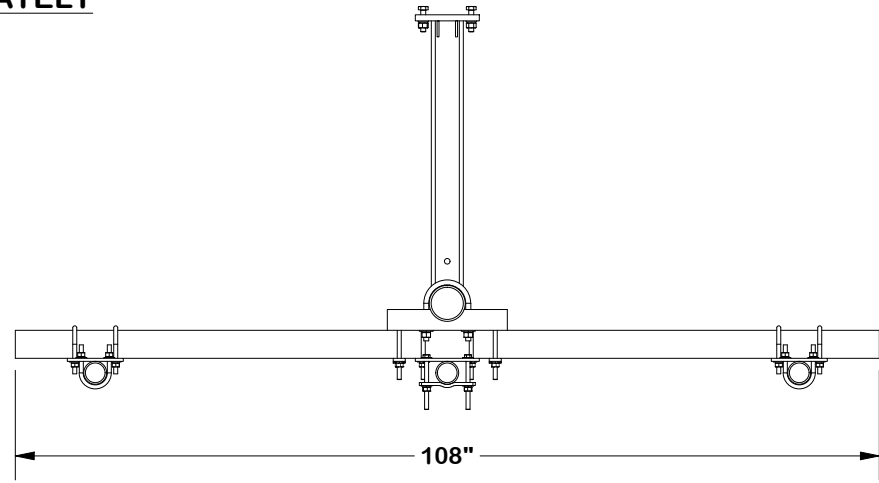


Engineering Support Team:  
 sp1engineering@valmont.com

CPD NO.	DRAWN BY	ENG. APPROVAL
NCS	ADB 8/25/2025	8/26/2025
CLASS	DRAWING USAGE	CHECKED BY
87	CUSTOMER	CSL 8/26/2025

PART NO.	T3D8-1NC-A3
DWG. NO.	T3D8-1NC-A3

**NOTE: COLLAR SOLD SEPARATELY  
FLX3-SD OR FLX4-SD**



**TOLERANCE NOTES**

TOLERANCES ON DIMENSIONS, UNLESS OTHERWISE NOTED ARE:  
 SAWED, SHEARED AND GAS CUT EDGES ( $\pm 0.030"$ )  
 DRILLED AND GAS CUT HOLES ( $\pm 0.030"$ ) - NO CONING OF HOLES  
 LASER CUT EDGES AND HOLES ( $\pm 0.010"$ ) - NO CONING OF HOLES  
 BENDS AND ANGLES ARE  $\pm 1/2$  DEGREE  
 ALL OTHER MACHINING ( $\pm 0.030"$ )  
 ALL OTHER ASSEMBLY ( $\pm 0.060"$ )

PATENT INFORMATION: WWW.SITEPRO1.COM/PATENTS

PROPRIETARY NOTE:  
 THE DATA AND TECHNIQUES CONTAINED IN THIS DRAWING ARE PROPRIETARY INFORMATION OF VALMONT INDUSTRIES AND CONSIDERED A TRADE SECRET. ANY USE OR DISCLOSURE WITHOUT THE CONSENT OF VALMONT INDUSTRIES IS STRICTLY PROHIBITED.

DESCRIPTION  
**HEAVY T1-8-3  
 8' NOMINAL SINGLE-SECTOR  
 DUAL-LEVEL T-ARM KIT,  
 W/ 3 MAST PIPES, 3' STANDOFF & NO COLLAR**

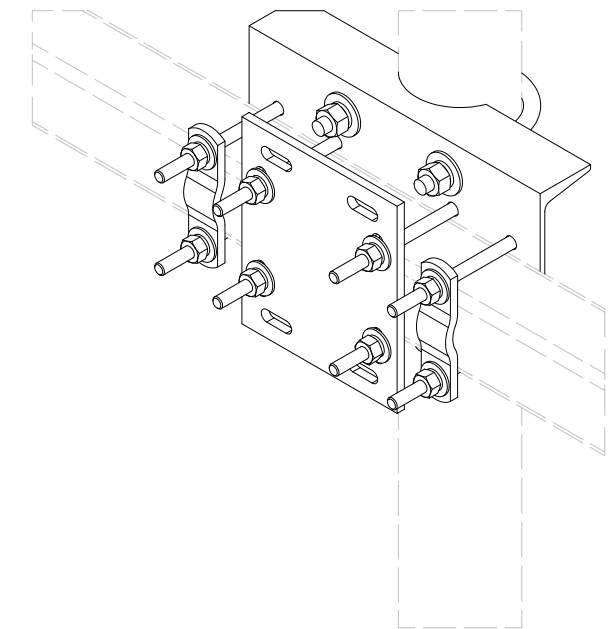
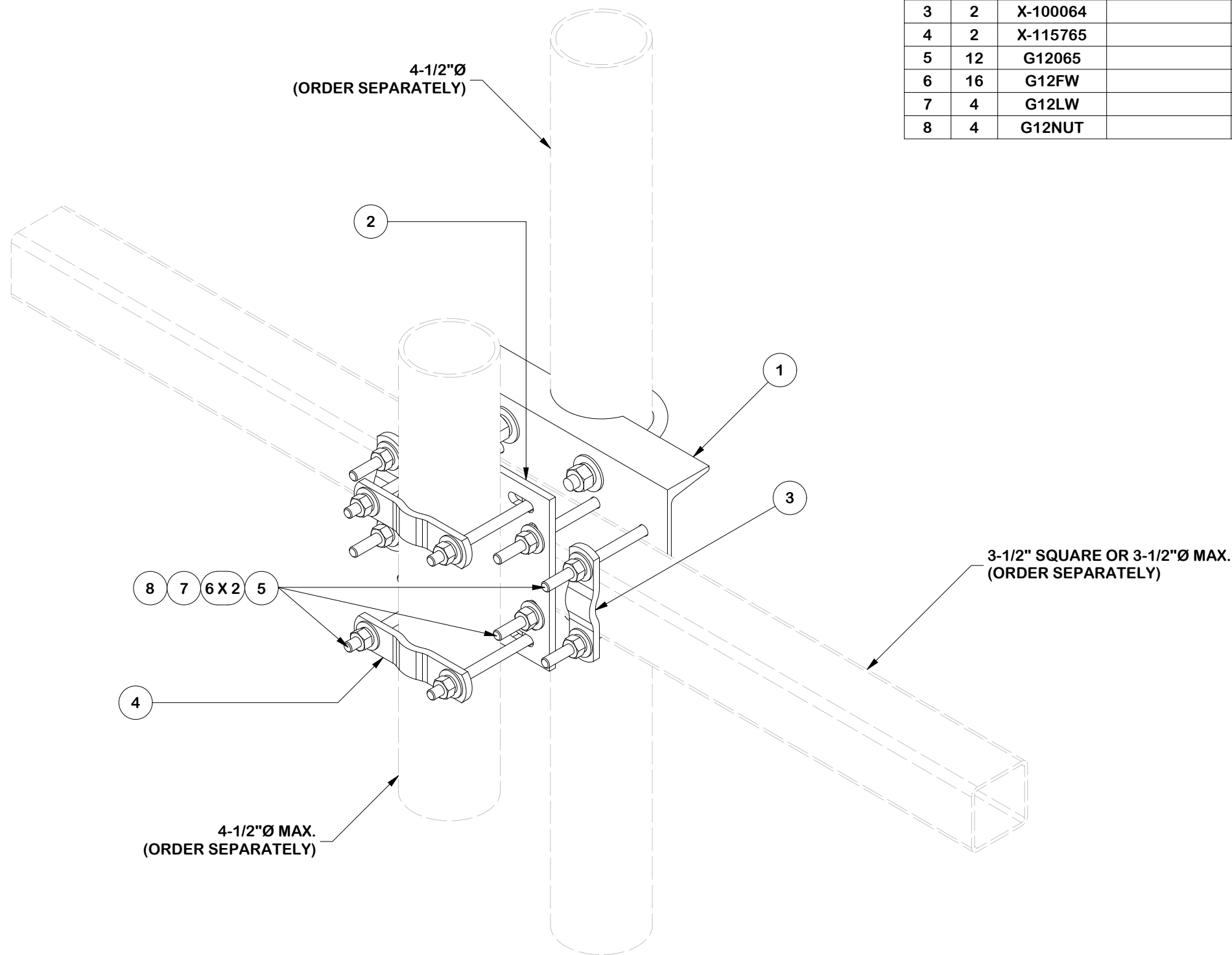


Engineering Support Team:  
 sp1engineering@valmont.com

CPD NO. <b>NCS</b>	DRAWN BY <b>ADB 8/25/2025</b>	ENG. APPROVAL <b>8/26/2025</b>
CLASS <b>87</b>	SUB <b>02</b>	DRAWING USAGE <b>CUSTOMER</b>
	CHECKED BY <b>CSL 8/26/2025</b>	

PART NO. <b>T3D8-1NC-A3</b>
DWG. NO. <b>T3D8-1NC-A3</b>

PARTS LIST							
ITEM	QTY	PART NO.	BOX NO.	PART DESCRIPTION	LENGTH	UNIT WT.	NET WT.
1	1	SP216	P-SP216	LARGE PIPE SUPPORT CROSS PLATE		30.46	30.46
2	1	SCX3		CROSSOVER PLATE	9 1/4 in	7.19	7.19
3	2	X-100064		CLAMP (4" V-CLAMP) GALVANIZED	6 in	0.92	1.84
4	2	X-115765		5" V-CLAMP	7 1/16 in	1.09	2.17
5	12	G12065		1/2" x 6-1/2" HDG HEX BOLT GR5 FULL THREAD	6 1/2 in	0.41	4.91
6	16	G12FW		1/2" HDG USS FLATWASHER	3/32 in	0.03	0.55
7	4	G12LW		1/2" HDG LOCKWASHER	1/8 in	0.01	0.06
8	4	G12NUT		1/2" HDG HEAVY 2H HEX NUT	7/8 in	0.07	0.29
TOTAL WT. #							47.11



**NO MOUNT PIPE VIEW**

REV	DESCRIPTION OF REVISIONS	CPD	BY	DATE
A	UPDATED TO SUPER	NCS	CSL	12/30/2025
REVISION HISTORY				

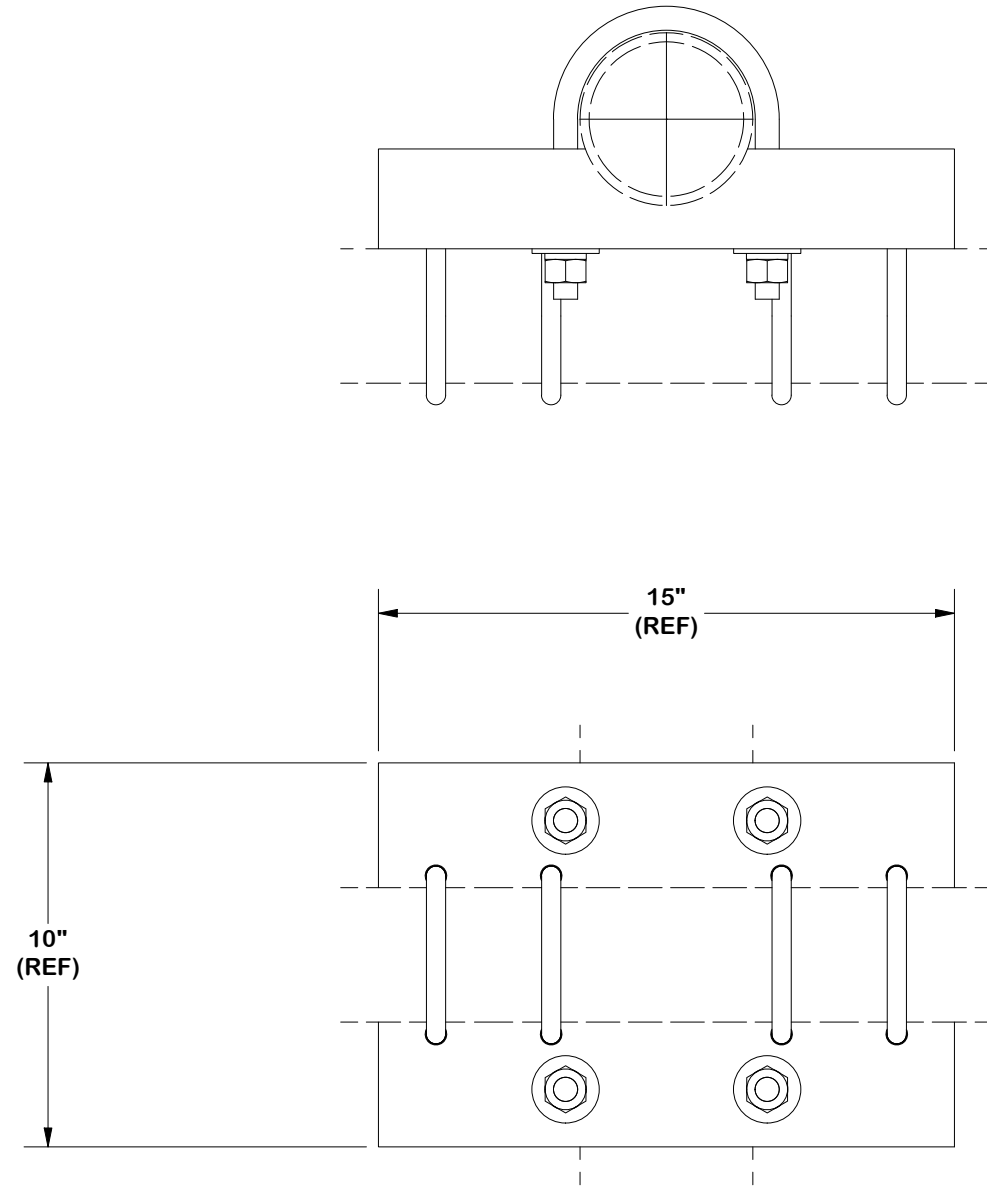
**TOLERANCE NOTES**  
 TOLERANCES ON DIMENSIONS, UNLESS OTHERWISE NOTED ARE:  
 SAWED, SHEARED AND GAS CUT EDGES ( $\pm 0.030"$ )  
 DRILLED AND GAS CUT HOLES ( $\pm 0.030"$ ) - NO CONING OF HOLES  
 LASER CUT EDGES AND HOLES ( $\pm 0.010"$ ) - NO CONING OF HOLES  
 BENDS AND ANGLES ARE  $\pm 1/2$  DEGREE  
 ALL OTHER MACHINING ( $\pm 0.030"$ )  
 ALL OTHER ASSEMBLY ( $\pm 0.060"$ )

PATENT INFORMATION: WWW.SITEPRO1.COM/PATENTS

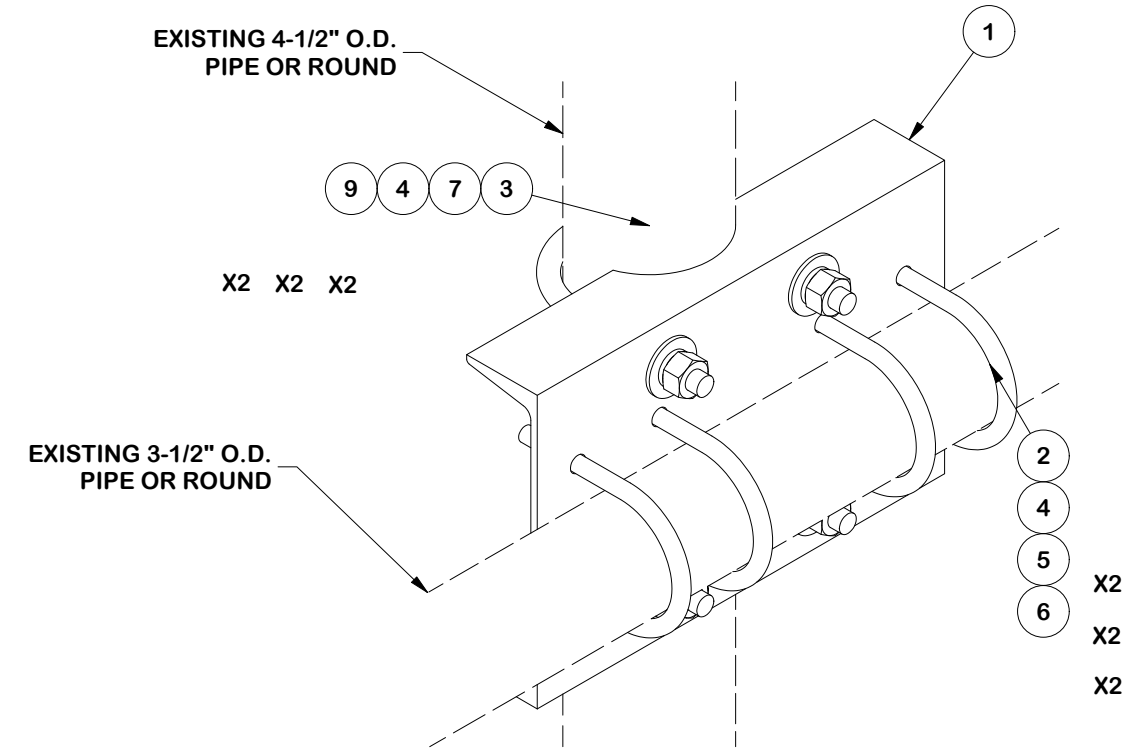
PROPRIETARY NOTE:  
 THE DATA AND TECHNIQUES CONTAINED IN THIS DRAWING ARE PROPRIETARY INFORMATION OF VALMONT INDUSTRIES AND CONSIDERED A TRADE SECRET. ANY USE OR DISCLOSURE WITHOUT THE CONSENT OF VALMONT INDUSTRIES IS STRICTLY PROHIBITED.

DESCRIPTION <b>HEAVY T1-8-3 8' NOMINAL SINGLE-SECTOR DUAL-LEVEL T-ARM KIT, W/ 3 MAST PIPES, 3' STANDOFF &amp; NO COLLAR</b>			
CPD NO. <b>NCS</b>	DRAWN BY <b>ADB 8/25/2025</b>	ENG. APPROVAL <b>8/26/2025</b>	
CLASS <b>87</b>	SUB <b>02</b>	DRAWING USAGE <b>CUSTOMER</b>	CHECKED BY <b>CSL 8/26/2025</b>

 A valmont COMPANY		Engineering Support Team: sp1engineering@valmont.com	
PART NO. <b>SP216-CK</b>		DWG. NO. <b>T3D8-1NC-A3</b>	



PARTS LIST						
ITEM	QTY	PART NO.	PART DESCRIPTION	LENGTH	UNIT WT.	NET WT.
1	1	X-SP216	LARGE SUPPORT CROSS PLATE		22.08	22.08
2	4	X-UB1358	1/2" X 3-5/8" X 5-1/2" X 3" U-BOLT	5 1/2 in	0.82	3.27
3	2	X-UB5458	5/8 X 4-5/8" X 7" X 3" U-BOLT	7 in	1.63	3.25
4	8	G12NUT	1/2" HDG HEAVY 2H HEX NUT	7/8 in	0.07	0.57
5	8	G12LW	1/2" HDG LOCKWASHER	1/8 in	0.01	0.11
6	8	G12FW	1/2" HDG USS FLATWASHER	3/32 in	0.03	0.27
7	4	G58NUT	5/8" HDG HEAVY 2H HEX NUT		0.13	0.52
4	4	G58LW	5/8" HDG LOCKWASHER		0.03	0.10
9	4	G58FW	5/8" HDG USS FLATWASHER	1/8 in	0.07	0.28
TOTAL WT. #						28.84



**TOLERANCE NOTES**

TOLERANCES ON DIMENSIONS, UNLESS OTHERWISE NOTED ARE:  
 SAWED, SHEARED AND GAS CUT EDGES ( $\pm 0.030"$ )  
 DRILLED AND GAS CUT HOLES ( $\pm 0.030"$ ) - NO CONING OF HOLES  
 LASER CUT EDGES AND HOLES ( $\pm 0.010"$ ) - NO CONING OF HOLES  
 BENDS AND ANGLES ARE  $\pm 1/2$  DEGREE  
 ALL OTHER MACHINING ( $\pm 0.030"$ )  
 ALL OTHER ASSEMBLY ( $\pm 0.060"$ )

PATENT INFORMATION: WWW.SITEPRO1.COM/PATENTS

PROPRIETARY NOTE:  
 THE DATA AND TECHNIQUES CONTAINED IN THIS DRAWING ARE PROPRIETARY INFORMATION OF VALMONT INDUSTRIES AND CONSIDERED A TRADE SECRET. ANY USE OR DISCLOSURE WITHOUT THE CONSENT OF VALMONT INDUSTRIES IS STRICTLY PROHIBITED.

DESCRIPTION  
**HEAVY T1-8-3  
 8' NOMINAL SINGLE-SECTOR  
 DUAL-LEVEL T-ARM KIT,  
 W/ 3 MAST PIPES, 3' STANDOFF & NO COLLAR**



Engineering Support Team:  
 sp1engineering@valmont.com

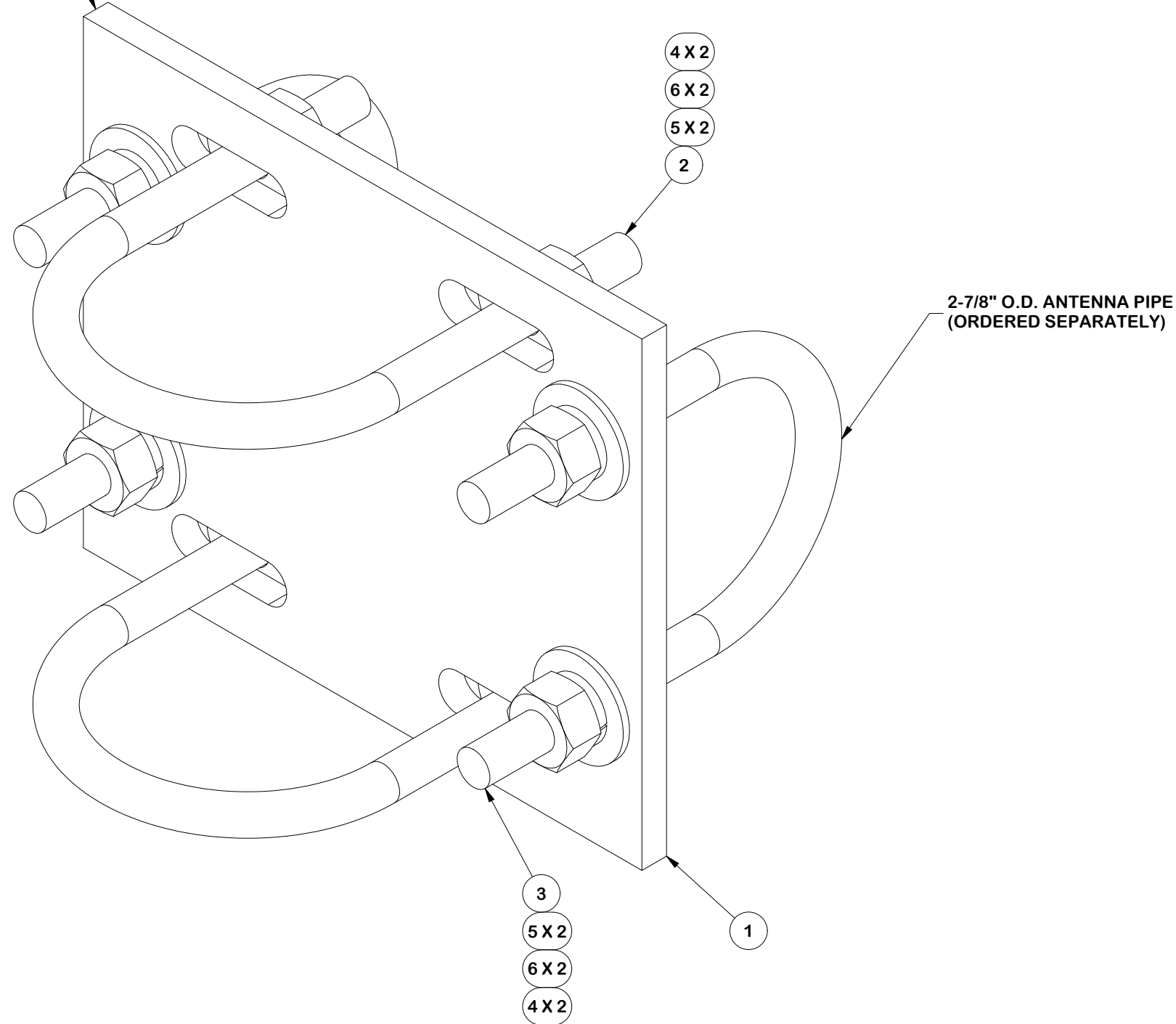
CPD NO. <b>NCS</b>	DRAWN BY <b>ADB 8/25/2025</b>	ENG. APPROVAL <b>8/26/2025</b>
CLASS <b>87</b>	SUB <b>02</b>	DRAWING USAGE <b>CUSTOMER</b>
CHECKED BY <b>CSL 8/26/2025</b>		

PART NO. <b>SP216</b>	DWG. NO. <b>T3D8-1NC-A3</b>
--------------------------	--------------------------------

REV	DESCRIPTION OF REVISIONS	CPD	BY	DATE
A	REDRAWN IN INV, UPDATED VIEWS & TABLE		KC8	8/17/2012

PARTS LIST						
ITEM	QTY	PART NO.	PART DESCRIPTION	LENGTH	UNIT WT.	NET WT.
1	1	SCX4	CROSSOVER PLATE	8 1/2 in	6.02	6.02
5	8	G12FW	1/2" HDG USS FLATWASHER	3/32 in	0.03	0.27
6	8	G12LW	1/2" HDG LOCKWASHER	1/8 in	0.01	0.11
4	8	G12NUT	1/2" HDG HEAVY 2H HEX NUT	7/8 in	0.07	0.57
2	2	X-UB1358	1/2" X 3-5/8" X 5-1/2" X 3" U-BOLT	5 1/2 in	0.82	1.64
3	2	X-UB1300	1/2 X 3" X 5" X 2" U-BOLT	5 in	0.74	1.48
					TOTAL WT. #	9.92

3-1/2" O.D. ANTENNA PIPE  
(ORDERED SEPRATELY)



2-7/8" O.D. ANTENNA PIPE  
(ORDERED SEPRATELY)

**TOLERANCE NOTES**

TOLERANCES ON DIMENSIONS, UNLESS OTHERWISE NOTED ARE:  
 SAWED, SHEARED AND GAS CUT EDGES ( $\pm 0.030"$ )  
 DRILLED AND GAS CUT HOLES ( $\pm 0.030"$ ) - NO CONING OF HOLES  
 LASER CUT EDGES AND HOLES ( $\pm 0.010"$ ) - NO CONING OF HOLES  
 BENDS AND ANGLES ARE  $\pm 1/2$  DEGREE  
 ALL OTHER MACHINING ( $\pm 0.030"$ )  
 ALL OTHER ASSEMBLY ( $\pm 0.060"$ )

PATENT INFORMATION: WWW.SITEPRO1.COM/PATENTS

PROPRIETARY NOTE:  
 THE DATA AND TECHNIQUES CONTAINED IN THIS DRAWING ARE PROPRIETARY INFORMATION OF VALMONT INDUSTRIES AND CONSIDERED A TRADE SECRET. ANY USE OR DISCLOSURE WITHOUT THE CONSENT OF VALMONT INDUSTRIES IS STRICTLY PROHIBITED.

DESCRIPTION  
**HEAVY T1-8-3  
 8' NOMINAL SINGLE-SECTOR  
 DUAL-LEVEL T-ARM KIT,  
 W/ 3 MAST PIPES, 3' STANDOFF & NO COLLAR**



Engineering Support Team:  
 sp1engineering@valmont.com

CPD NO.	DRAWN BY	ENG. APPROVAL
NCS	ADB 8/25/2025	8/26/2025
CLASS	DRAWING USAGE	CHECKED BY
87	CUSTOMER	CSL 8/26/2025

PART NO.	SCX45-K
DWG. NO.	T3D8-1NC-A3